

Combat Service Support Battalion - 10



LtCol Bob Weinkle

28 October 2004



CSSB-10 Mission



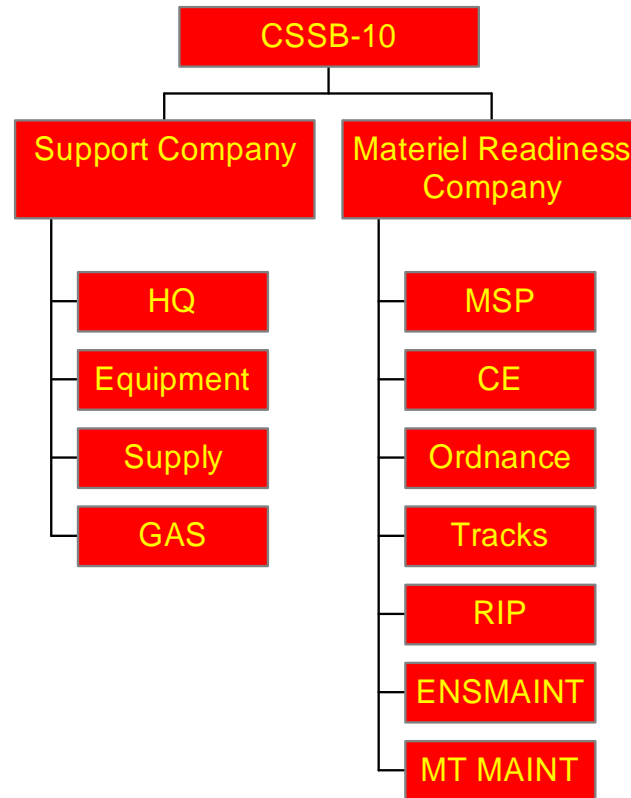
Provide combat service support (CSS) to I MEF units based at MCAGCC and to Exercise Forces operating at MCAGCC.

During contingency operations, CSSB-10 conducts Direct Support CSS operations in I MEF zone, with priority support to CSS Companies supporting Regimental Combat Teams.



CSSB-10

Garrison Organization



T/O: 462 Marines and Sailors



Garrison Maintenance Operations At Marine Corps Base Twentynine Palms, California





Typical Yearly CSSB-10 External Support Statistics



Cumulative ERO'S

• C/E	3,756
• ENGINEER MAINTENANCE	254
• ORDNANCE MAINTENANCE	2,430
• TRACKS	487
• BARSTOW	77
• TOTAL ERO COUNT	7,004



Typical Year CSSB-10 External Support Statistics Cont.



Repairable Issue Point (RIP)

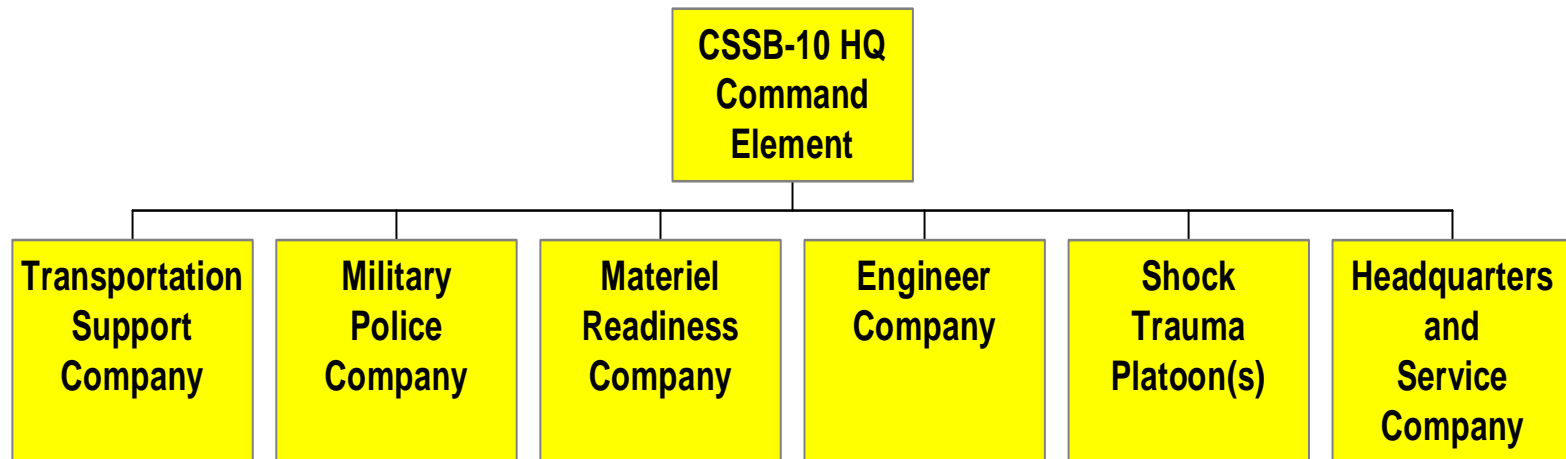
- ISSUES 2,937
- REDISTRIBUTIONS 3,240
(Serviceable and Unserviceable)

Engineer Equipment Operating Hours 1,021

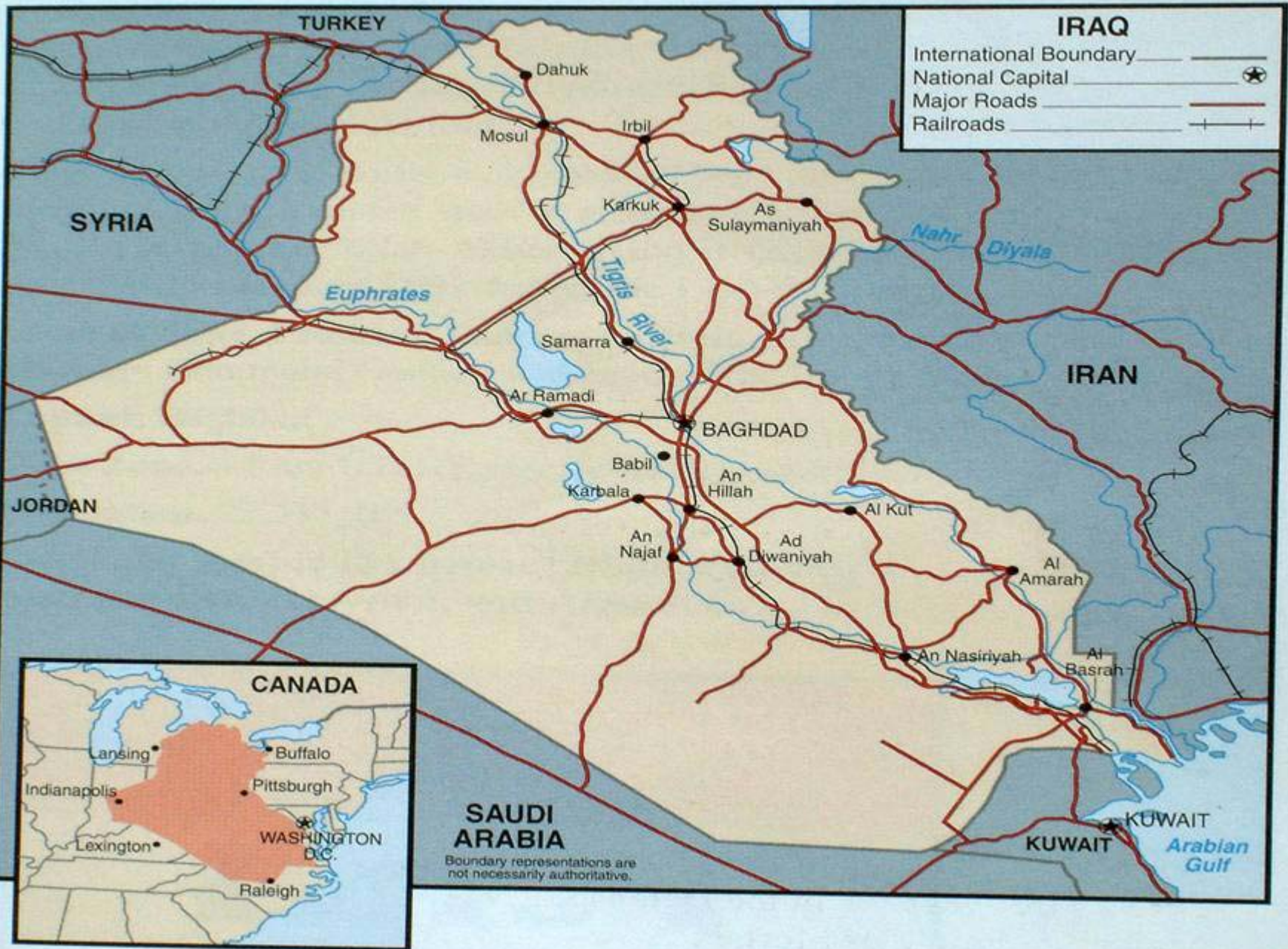
Motor Transportation Driving Miles 49,850



CSSB-10



T/O: 947 Marines and Sailors















Class IX ?????



ACCOMPLISHMENTS



- Provided Direct and General CSS to the 1st Marine Division.
 - Over 21,000 personnel in 28 units
 - Over 4,500 tracked and wheeled vehicles
 - Army, Navy and UK units operating in zone
- Dispatched 400 + combat convoys and Maintenance Support Teams.
- Established 19 Repair and Replenishment Points (RRP)
 - 14 Combat RRP
- 3,000 Equipment Repair Orders opened during combat operations.
- Presidential Unit Citation
- Combat Action Ribbon



ACCOMPLISHMENTS



- Humanitarian Generator Repair
- Water Trailer drain plug fabrication
- Field expedient engine alternator and starter repair
- Near constant 5K refueler and ROWPU repair
- Innovative vehicle recovery methods
- Rapid convoy matrix development
- Cross-Training of Marines: Planned and Unplanned

Secrets of Success

A line of military vehicles, possibly Humvees, is parked in a desert environment. A soldier in camouflage gear and a helmet is walking in the foreground, carrying a rifle. The vehicles are equipped with various gear and have a rugged appearance.

Every Marine a Rifleman

NCO Leadership: Operation Bloodstripe

Innovative Transportation Convoy Matrices

Encouraged initiative in Maintenance and Supply Operations



Questions ?





