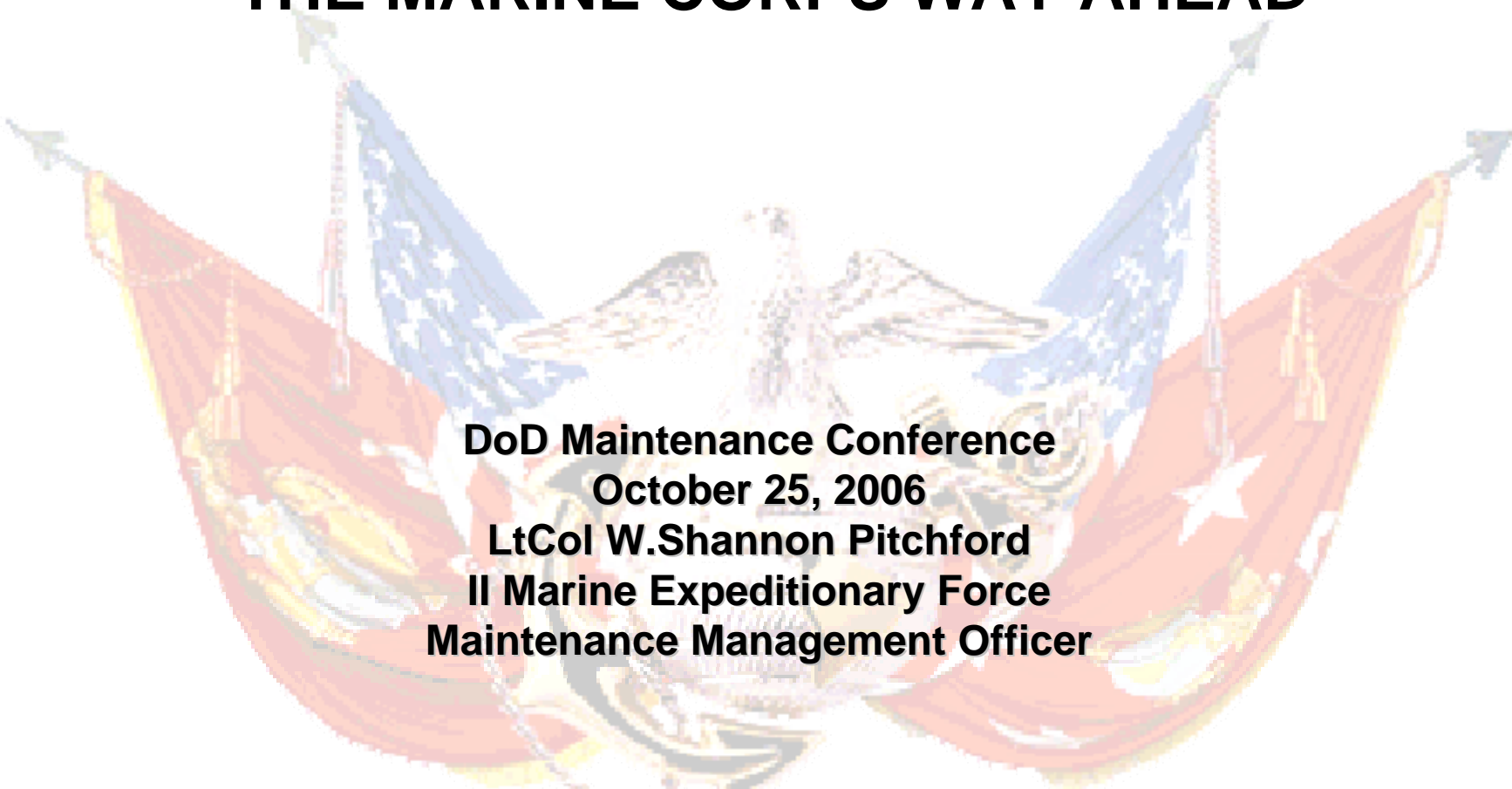


ALIGNING METRICS FOR EFFECTIVE MAINTENANCE MANAGEMENT

THE MARINE CORPS WAY AHEAD

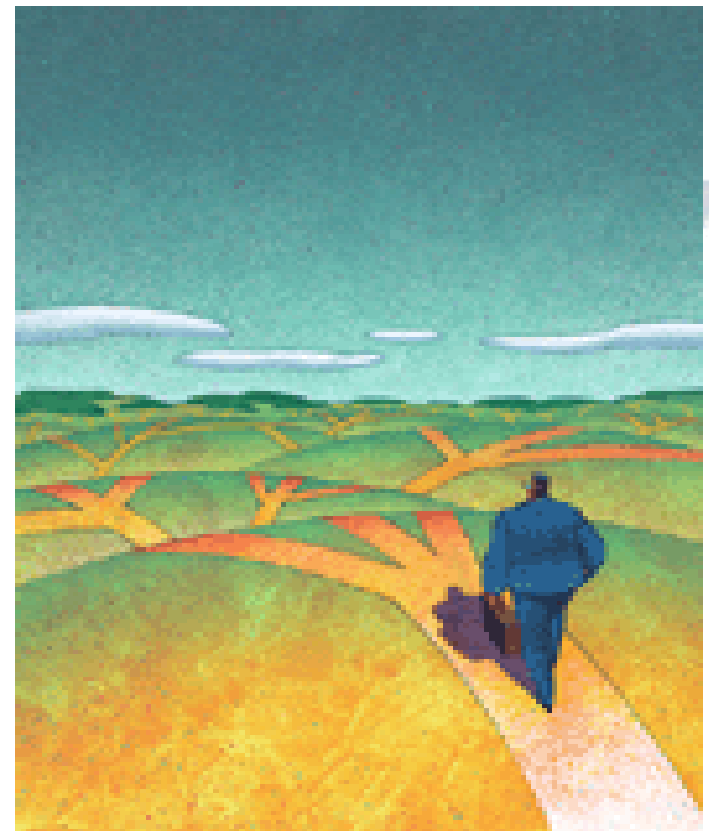


**DoD Maintenance Conference
October 25, 2006
LtCol W.Shannon Pitchford
II Marine Expeditionary Force
Maintenance Management Officer**

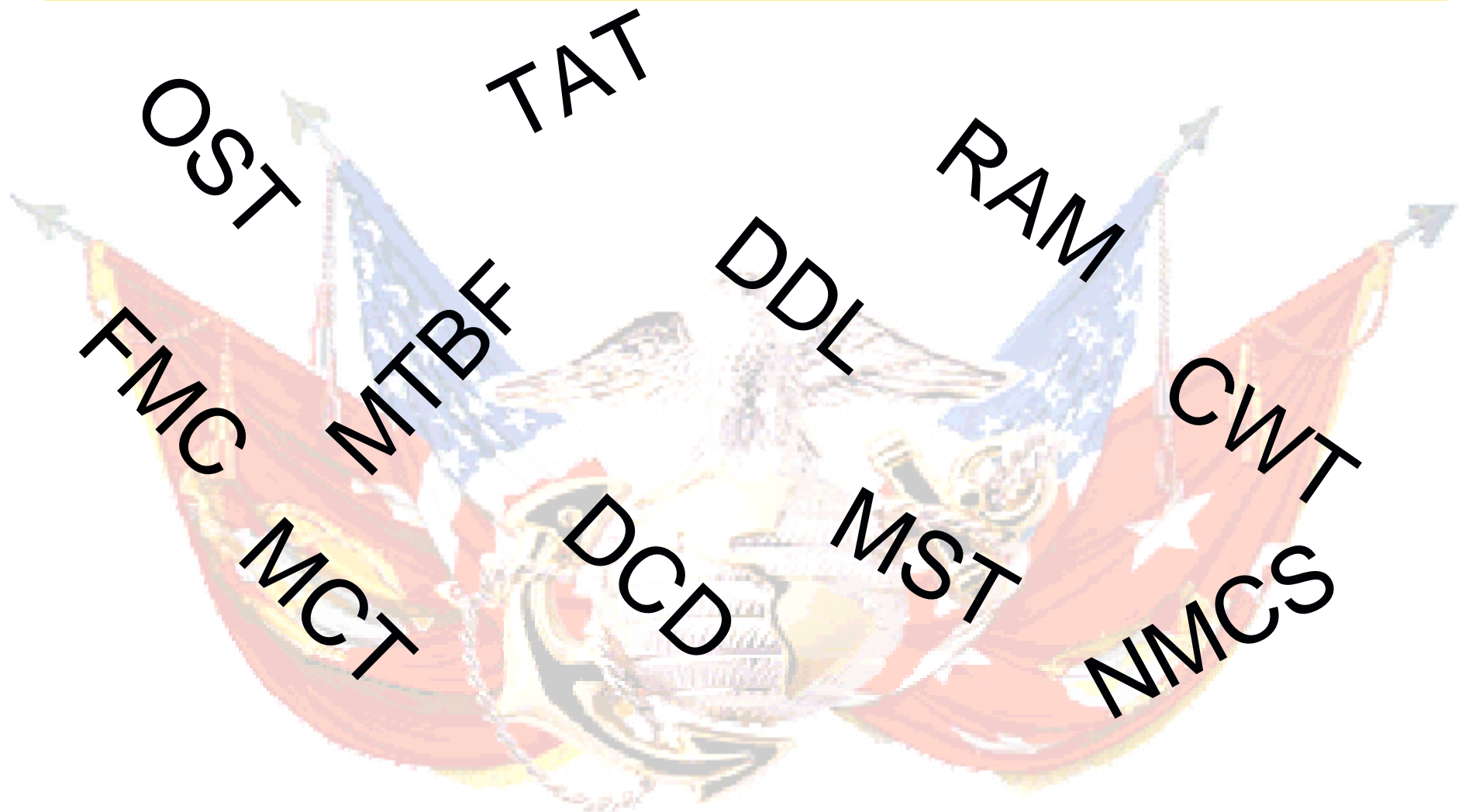
ROADMAP FOR IMPROVEMENT

“If you don't know
where you are
going, any road
will get you there”

- Lewis Carroll



WHAT ARE WE MEASURING TODAY?



WHY MEASURE

- ✓ TO ENSURE OPERATIONAL AVAILABILITY OF COMBAT POWER/CAPABILITIES
- ✓ TO IDENTIFY GAPS IN YOUR LOGISTICS CHAIN
- ✓ TO PROVIDE THE COMMANDERS AT ALL LEVELS (STRATEGIC, OPERATIONAL AND TACTICAL) WITH THE RESOURCES TO MAKE DECISIONS.
- ✓ TO MAKE TOTAL LIFE CYCLE MANAGEMENT DECISIONS RELATED TO WEAPONS SYSTEMS (ACQUISITION, SUSTAINMENT, REPLACEMENT)

CURRENT CONSTRAINTS TO MEASUREMENTS/METRICS

- ❌ LEGACY SYSTEMS WITH LIMITED CAPABILITIES
- ❌ LIMITED SHARED DATA ENVIRONMENT (SDE) AND INTEGRATED DATA ENVIRONMENT
- ❌ LACK OF REAL TIME LOGISTICS COMMON OPERATING PICTURE
- ❌ LACK OF DECISION SUPPORT TOOLS AT THE HHQ AND ENTERPRISE LEVEL

THE MARINE CORPS WAY AHEAD

- ✓ LOGISTICS MODERNIZATION (**SID**)
- ✓ GCSS-MC
- ✓ MARINE CORPS ENTERPRISE
READINESS INFORMATION TOOL (MERIT)
- ✓ Systems Operational Effectiveness
(SOE)
- ✓ Readiness Modeling and Simulation

Bridge to the Future... LCMI



QUESTIONS

