



2007 DoD Maintenance Symposium

*MG
Mike
Lenaers*

*14
Nov
2007*



Unclassified



TACOM LCMC

Mission / Product Lines / Magnitude

Develop, acquire, field, and sustain Soldier and ground systems for the Warfighter through the integration of effective and timely Acquisition, Logistics, and cutting-edge Technology

What we do (Core Competencies):

- Acquisition / Program Management
- Logistics, Industrial Operations, and Contracting
- Research, Development, Engineering

The Magnitude:

- 141 Allied Countries Own TACOM Equipment
- Every Army Unit has TACOM Equipment
- Approximately 3000 Fielded End Items
- 29,000 Components

The TACOM LCMC Product Lines:

- | | |
|-------------------------------|---|
| ▪ Combat Vehicles | ▪ Sets, Kits & Outfits |
| ▪ Trailers | ▪ Shop Equipment |
| ▪ Materiel Handling Equipment | ▪ Large Caliber Guns |
| ▪ Fuel & Water Dist Equipment | ▪ Watercraft |
| ▪ Chemical Defense Equipment | ▪ Mortars |
| ▪ Howitzers | ▪ Aircraft Armaments |
| ▪ Commercial Vehicles | ▪ Rail |
| ▪ Tactical Vehicles | ▪ Fuel & Lubricant Products |
| ▪ Construction Equipment | ▪ Rifles / Machine Guns |
| ▪ Tactical Bridges | ▪ Soldier Equipment |
| ▪ Armored Security Vehicle | ▪ Rapid Fielding Initiative |
| ▪ Route Clearing Vehicle | ▪ Mine Resistant Ambush Protection |

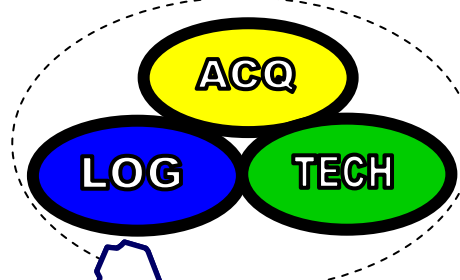


We support a diverse set of product lines through their life cycles, from combat and tactical vehicles, armaments, watercraft, fuel and water distribution equipment, to soldier, biological, and chemical equipment.



TACOM LCMC

Primary Locations



A

PEO GCS

- Warren, MI (HQ)
- Picatinny, NJ
- Huntsville, AL

PEO CS&CSS

- Warren, MI (HQ)
- Rock Island, IL
- Huntsville, AL
- Natick, MA

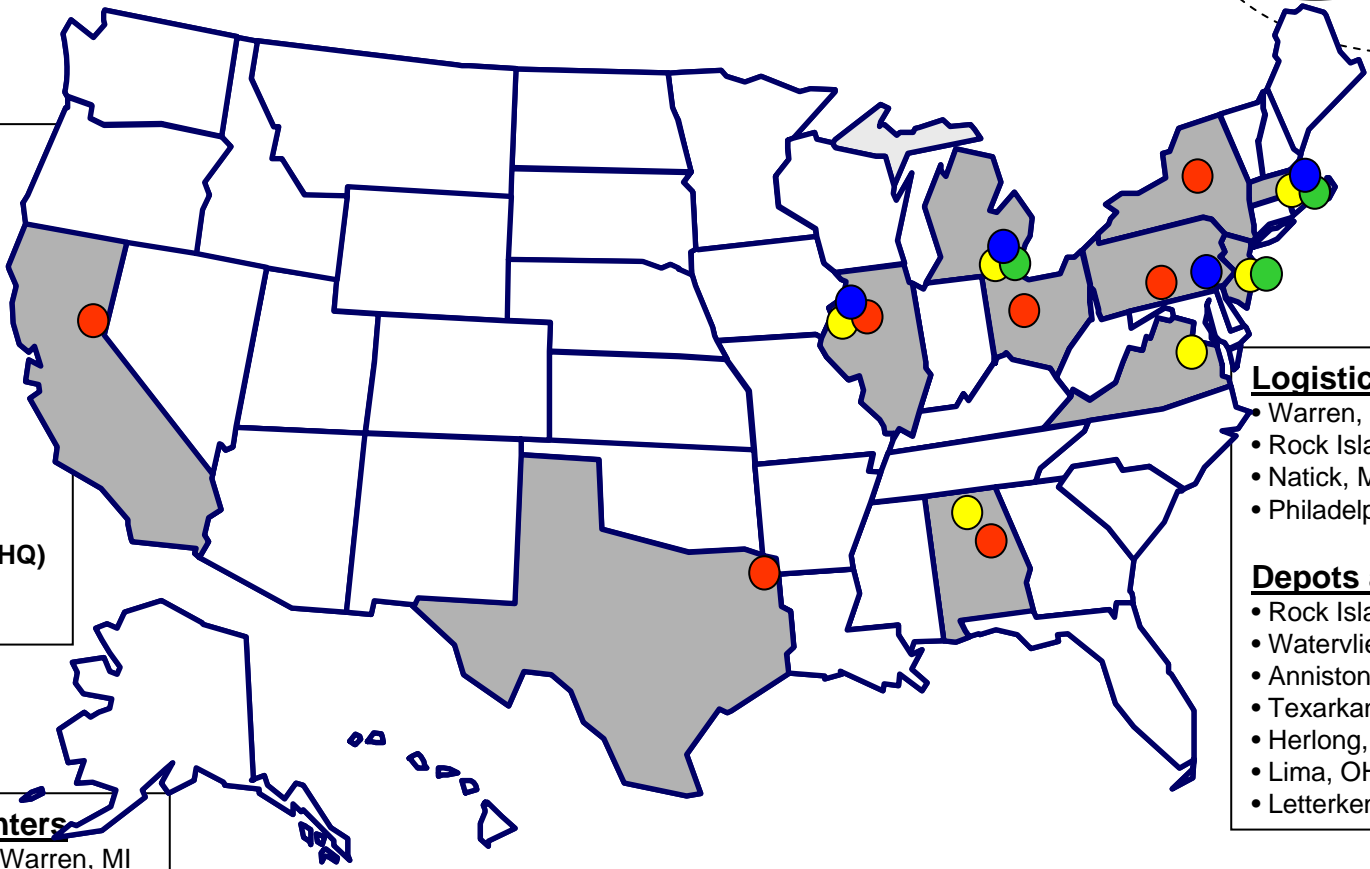
PEO Soldier

- Fort Belvoir, VA (HQ)
- Picatinny, NJ
- Huntsville, AL

T

RD&E Centers

- TARDEC - Warren, MI
- ARDEC - Picatinny, NJ
- NSC - Natick, MA



Logistics Centers

- Warren, MI (HQ)
- Rock Island, IL
- Natick, MA
- Philadelphia, PA

L

Depots and Arsenals

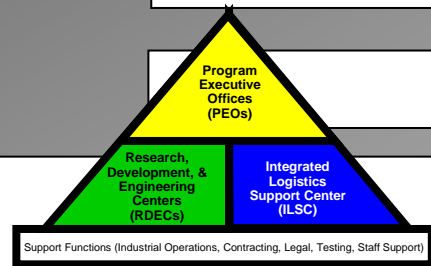
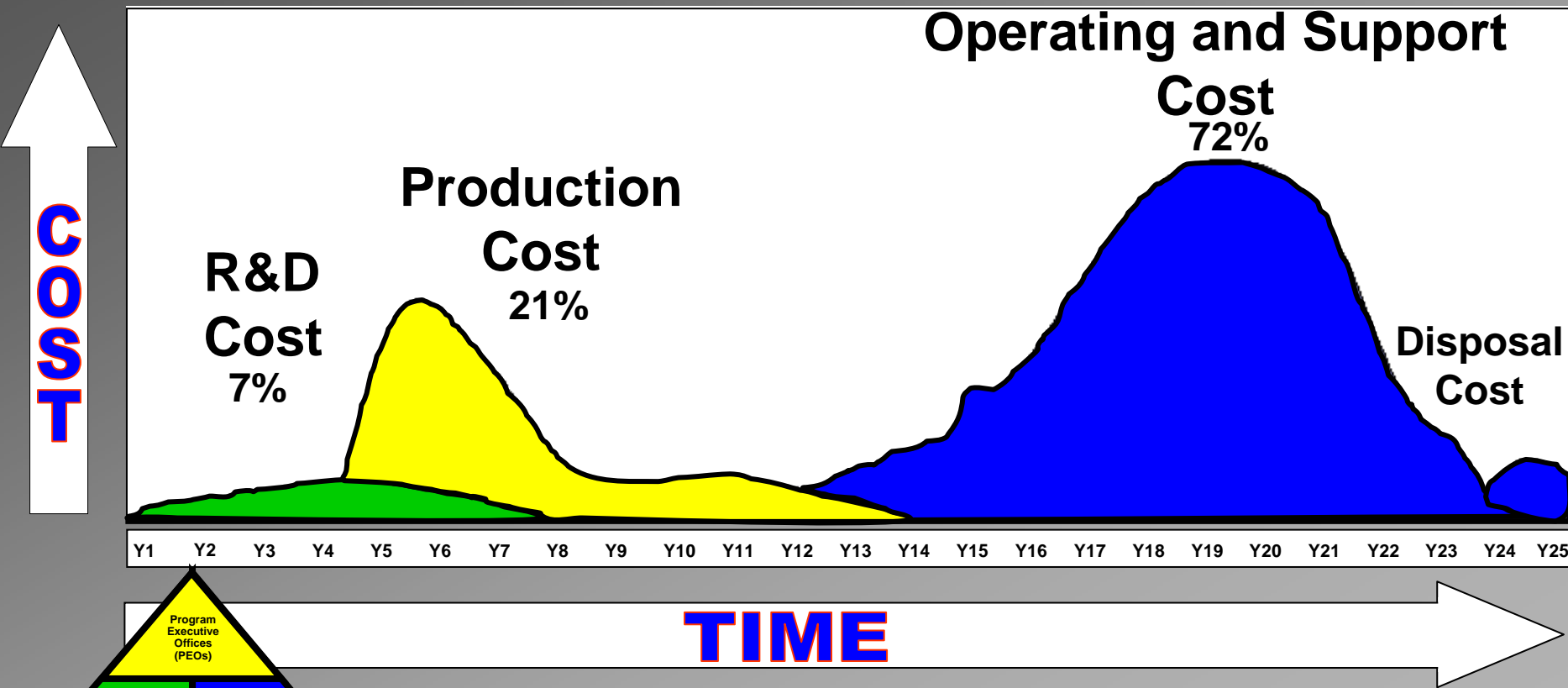
- Rock Island, IL (RIA)
- Watervliet, NY (WVA)
- Anniston, AL (ANAD)
- Texarkana, TX (RRAD)
- Herlong, CA (SIAD)
- Lima, OH (LIMA) - GOCO
- Letterkenny, PA (LEAD)

D

TACOM LCMC personnel are located around the world, everywhere Soldiers need us. TACOM LCMC Logistics Assistance Representatives (LARs) have been deployed to South West Asia along with ILSC and PEO personnel.



Moving to Life Cycle Management

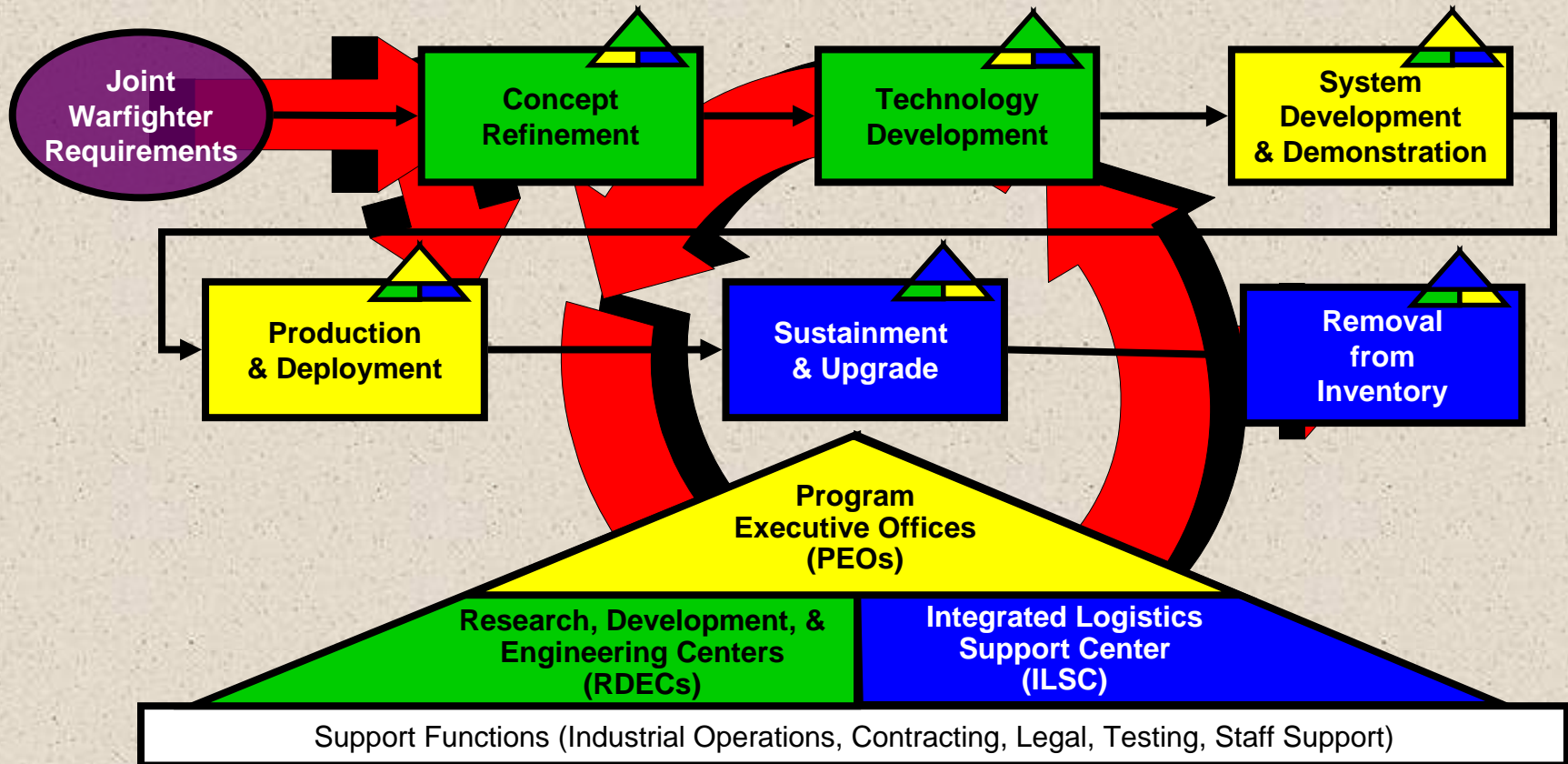


Requires a change in leadership focus



CONCEPTUAL BARRIERS

LIFE CYCLE MANAGEMENT IS NOT LINEAR



The objective is to get upgrades to the warfighter faster,

make our good production even better and reduce life cycle costs, and

enhance the effectiveness and integration of our Acquisition, Logistics, and Technology communities.

You should not expect different results if you keep doing things the same way.

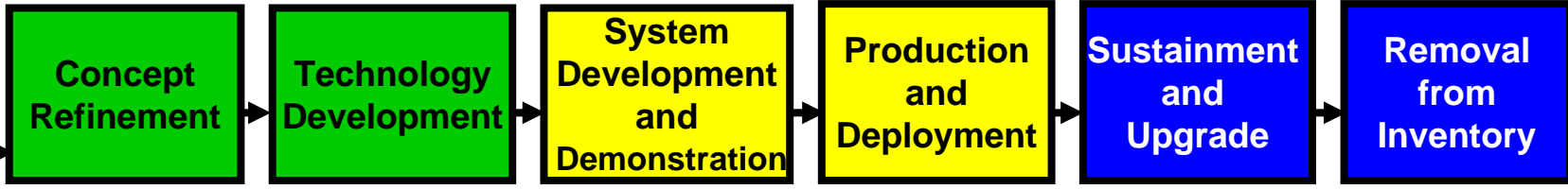


As easy as shooting ducks!



Total Life Cycle System Management

Joint Warfighter Reqmts



RDT&E



PA



AWCF / OMA





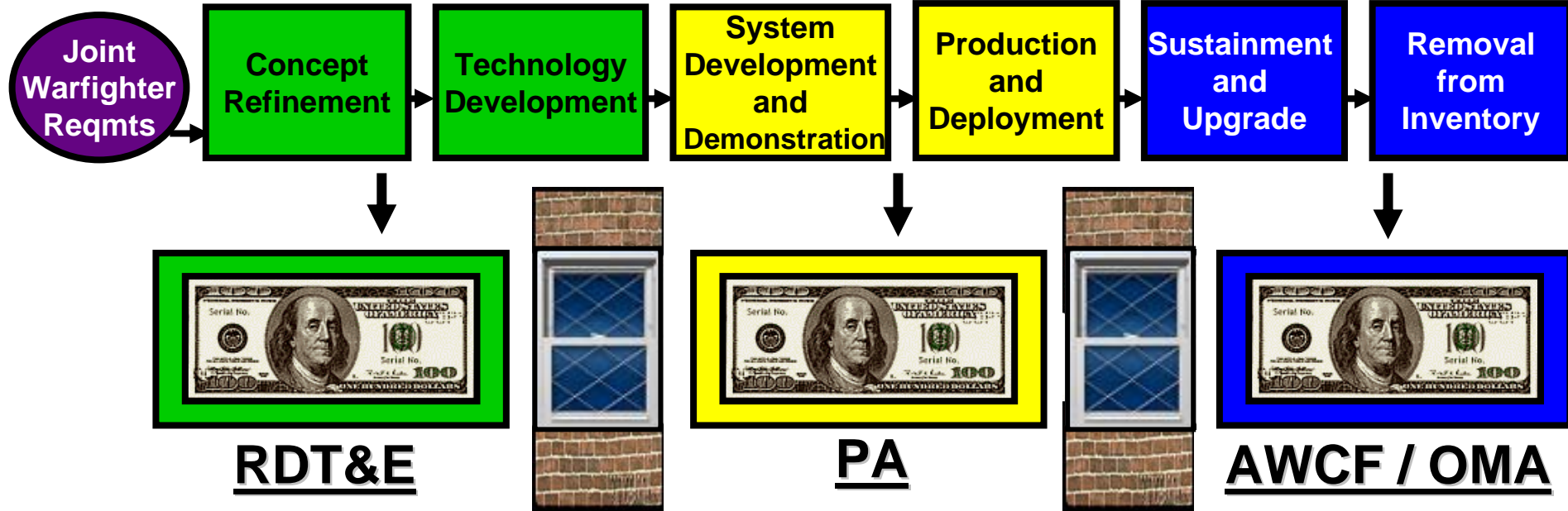
It Isn't That Tough



王甘迪 史官生



LCMC TRANSFORMATION CHALLENGE



- **CONCEPTUAL BARRIERS**
- **FINANCIAL BARRIERS**
- **POLICY BARRIERS**
- **LEGISLATIVE BARRIERS**
- **CULTURAL BARRIERS**
- **ORGANIZATIONAL BARRIERS**





Partnering in End Items

**Abrams AIM/SEP
Tank**

GDSL ↔ ANAD

**Bradley Fighting
Vehicle**

BAE ↔ RRAD

**Stryker Battle
Damage Repair**

GDLS ↔ ANAD

HEMTT Reset

Oshkosh ↔ RRAD

FMTV Reset

BAE ↔ RRAD

HMMWV Recap

AM General ↔ RRAD

MRAP

BAE ↔ LEAD

ASV

Textron ↔ RRAD

FCS Cannon

GDOTS ↔ WVA



Partnering in Components Refurb/Upgrade

TIGER Tank Engine Partnership

Program

- Execute a 5 Year Integrated program to sustain the AGT 1500 fleet to an average MTBDR of 1400 hours without increasing O&S Costs



Bradley Transmission Partnership

Program

- Pure Fleet to HMPT 500-3ECB Leverage, RESET, RECAP & Attrition



CAT Engine Rebuild - RRAD -

Program

- Furnish engines for reset, reman, or overhaul

CATERPILLAR





The Knack





12 AMC Programs Receive 2007 Shingo Prizes



Gold

- RRAD - HMMWV production
- RIA JM&T Center - Forward Repair System
- Tobyhanna Army Depot - AN/TPQ-36 Firefinder antenna

Silver

- ANAD - Field Artillery Ammunition Supply Vehicle
 - LEAD - HMMWV recapitalization
 - RRAD - Bradley Power-train and HEMTT
- RIA JM&T Center - Shop Equipment Contact Maintenance

Bronze

- ANAD - Automotive Gas Turbine 1500 Engine
- AMCOM LCMC - C20J Engine Line TH-57 Sea Ranger
 - Corpus Christi Army Depot - HH-60 Pavehawk
 - LEAD - Power Generators

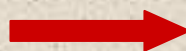


Army Campaign Plan Modular Conversion Update

	FY04	FY05	FY06	FY07	FY08	FY09	FY10	FY11	FY12
AC BCT Conversions	 1 2 3 1 3 1	 1 2 3 2 2 2 3	 1 2 3 1 2 3 173 3 ACR	 1 2 3 E-date 16 APR 07 Ft Hood	 1 E-date TBD NET FY08 1 Originally planned as HBCT – final force mix decision pending		 2	 3	
AC BCT Builds	 4 4 3	 4 4 4	 4 4 4			 X TBD	 X TBD	 X TBD	 X TBD
STRYKER	 3 3 3			 SBCT 4 SBCT 5	 SBCT 6	 SBCT 7			
ARNG BCT		 56/28 IBCT 1/34 HBCT 27 IBCT 30 HBCT 39 IBCT 81 HBCT 116 IBCT	 2/34 IBCT 26 IBCT 41 IBCT 33 IBCT 58 IBCT 116 HBCT 155 HBCT 256 HBCT 278 HBCT	 2/28 HBCT 29 IBCT 37 IBCT 40 IBCT 48 IBCT 53 IBCT 55/28 HBCT 56/36 IBCT 86 IBCT	 32 IBCT 45 IBCT 50 IBCT 72/36 IBCT 76 IBCT 92 IBCT 149 IBCT 218 HBCT 207 IBCT	Per QDR Guidance, ARNG is building to 28 BCTs; chart shows 34 ARNG BCTs pending force structure decision			

Army Maneuver Brigades 2004			
	AC	ARNG	Total
Infantry	14	15	29
Stryker	2	0	2
Heavy	17	23	40
Total	33	38 (*15)	71

*15 Enhanced Separate Brigades



Army Maneuver Brigades 2013			
	AC	ARNG	Total
Infantry	23	21	44
Stryker	6	1	7
Heavy	18	6	24
ACR	1	0	0
Total	48	28	76

- Increased Joint Combat Capability
- Globally Managed Deployments
- Improved Versatility

- Modular AC/RC Design
- Increased Readiness
- Increases Stability



ARFORGEN Is The Future

Creating Predictably Ready Forces



**Brigade Combat
Teams**

$$\frac{AC}{RC} \\ 48 + 28$$

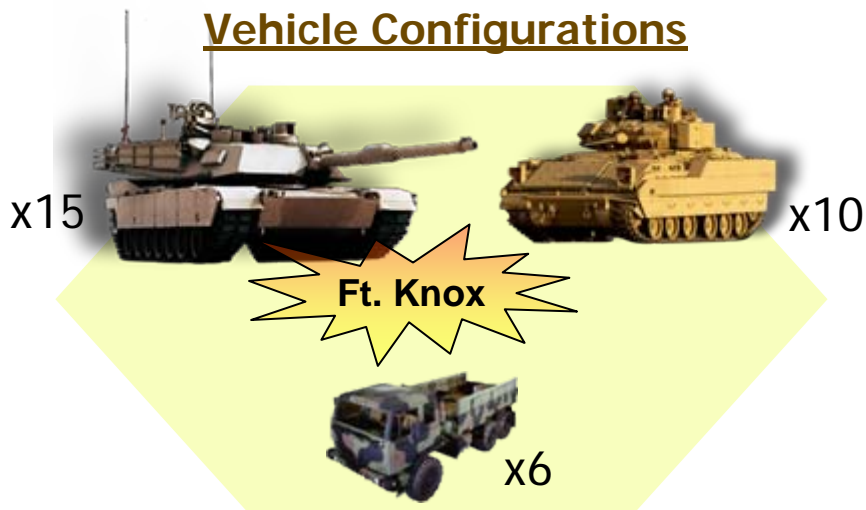
**CREATE A FLOW
OVER TIME WITH
78% OF UNITS
BEING READY**



Condition Based Maintenance

- Functional data from electronic control modules
- Platform sensors and Data
- Automatic data collection, storage, and transmission (transparent to the unit)
- Unique Item Tracking to key components
- Maintenance and Logistics analytical tools and reports
- Correlate Maintenance actions with data collected and shared with industry
- Risk reduction with Fort Knox Fielding
- Establishes the foundation for the LCMC CBM+ Capability

Vehicle Configurations



Giving Industry Visibility of their Systems
 → **Need Industry to Drive Smart Decisions** ←



Army has a Life Cycle Focus

- **Continuous product improvement**
 - Performance based logistics
 - Let us know when we make bad TRADES
- **Industry must be fast and agile**
- **Condition Based Maintenance needed**
 - Provide access to system data
 - Need industry help
 - Will be readiness and business case driven



Bottom Line

