



MAGTF Sense and Respond Logistics



And Its Influence on Future Ground Platforms

USMC LAV Program Management Office
Robert J. Lusardi, DPM

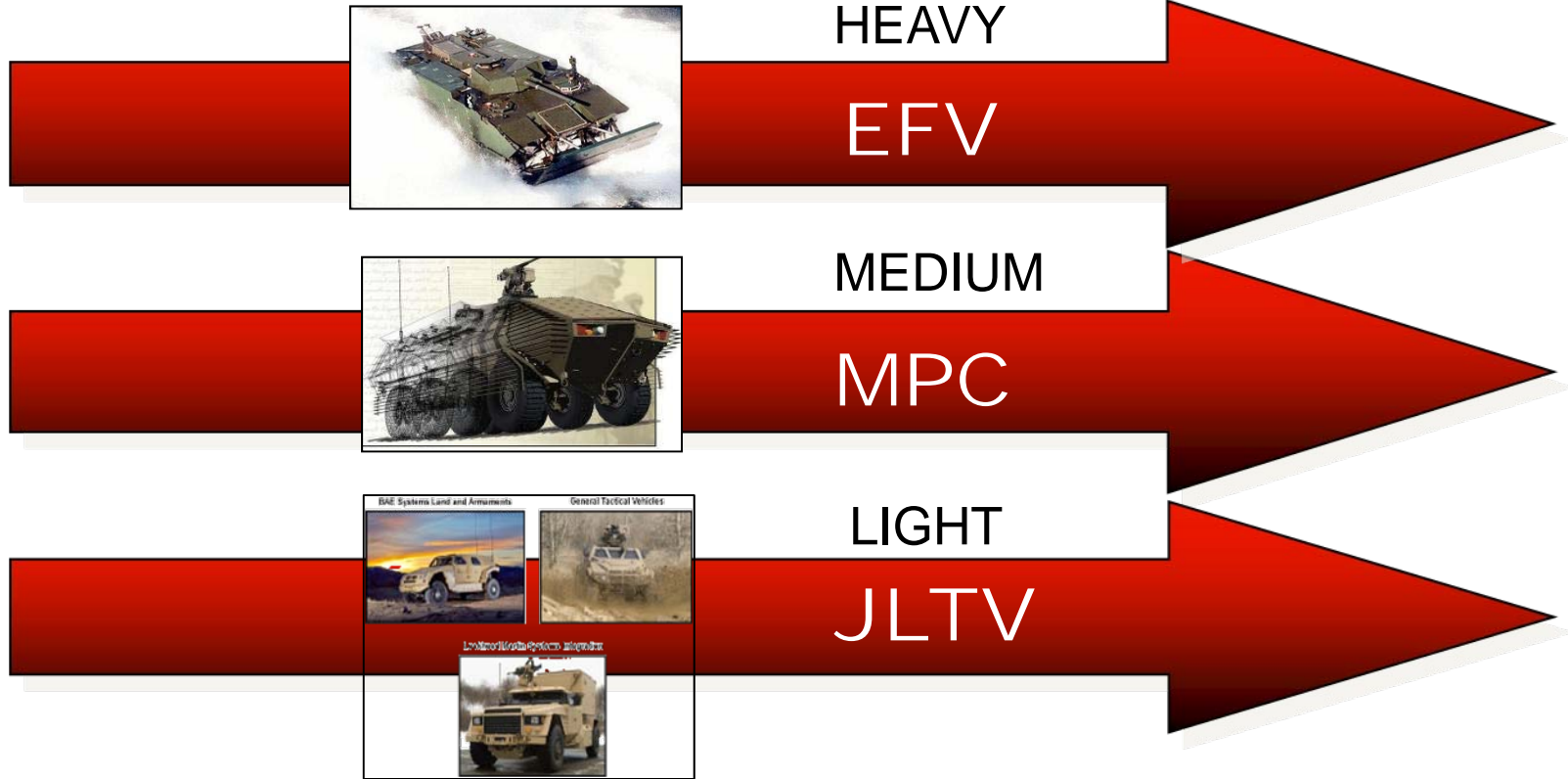
Marine Corps Future Triad of Tactical Mobility



2010



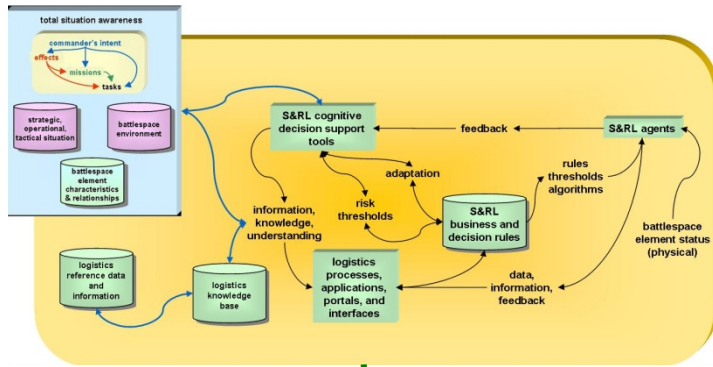
2050



Altering Initial Conditions: Proactive Support for Commander's Intent



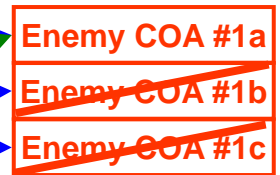
S&RL cognitive processes supporting planning and development of logistics, operations, and maneuver COAs



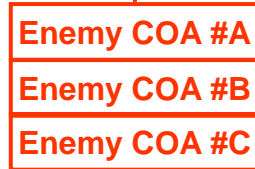
LOG Inputs

from OPS

Enemy COA locked in



Enemy COAs locked out

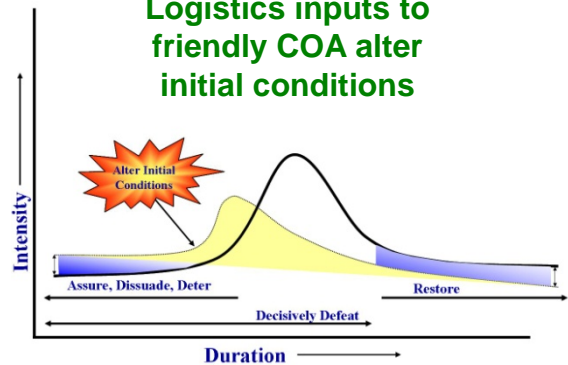


from INTEL



Logistics recommendations for operations and maneuver with reduced logistics risks

Logistics inputs to friendly COA alter initial conditions



Friendly COA influenced by logistics-developed operations and maneuver COA recommendations that reduce the risk of uncertainty, increase the probability of success

MAGTF S&RL Structure



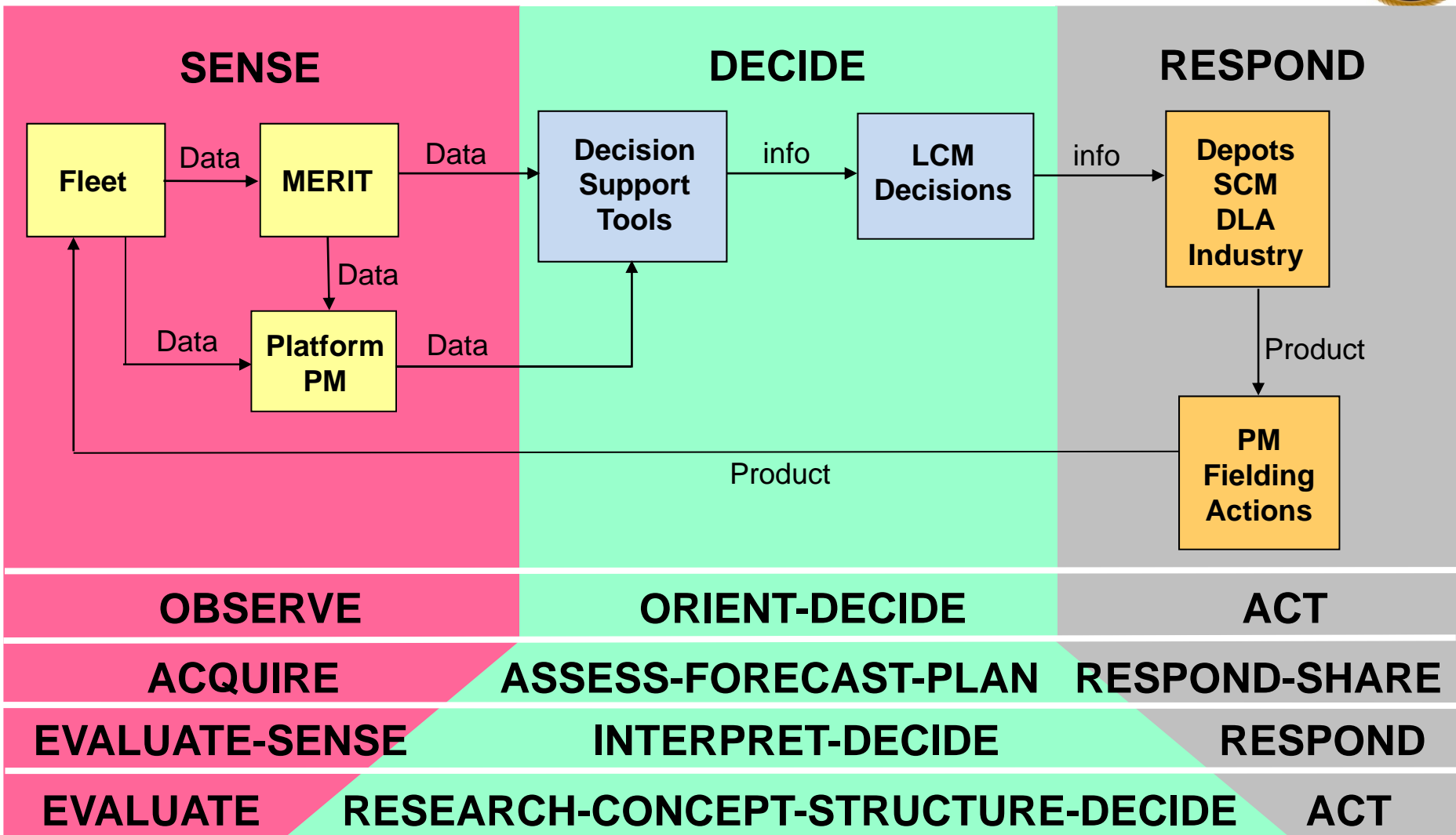
- MAGTF S&RL was founded on 53 Tasks derived from the Marine Corps Task List (MCTL), which is mapped to the Joint Universal Task List (UJTL) and the National Military Strategy (NMS).
- The 53 Tasks were then mapped to 6 Functional Areas that are the foundation for achieving MAGTF S&RL.



- A broad range of functional solutions were assessed leading to the identification of 4 Capability Areas.

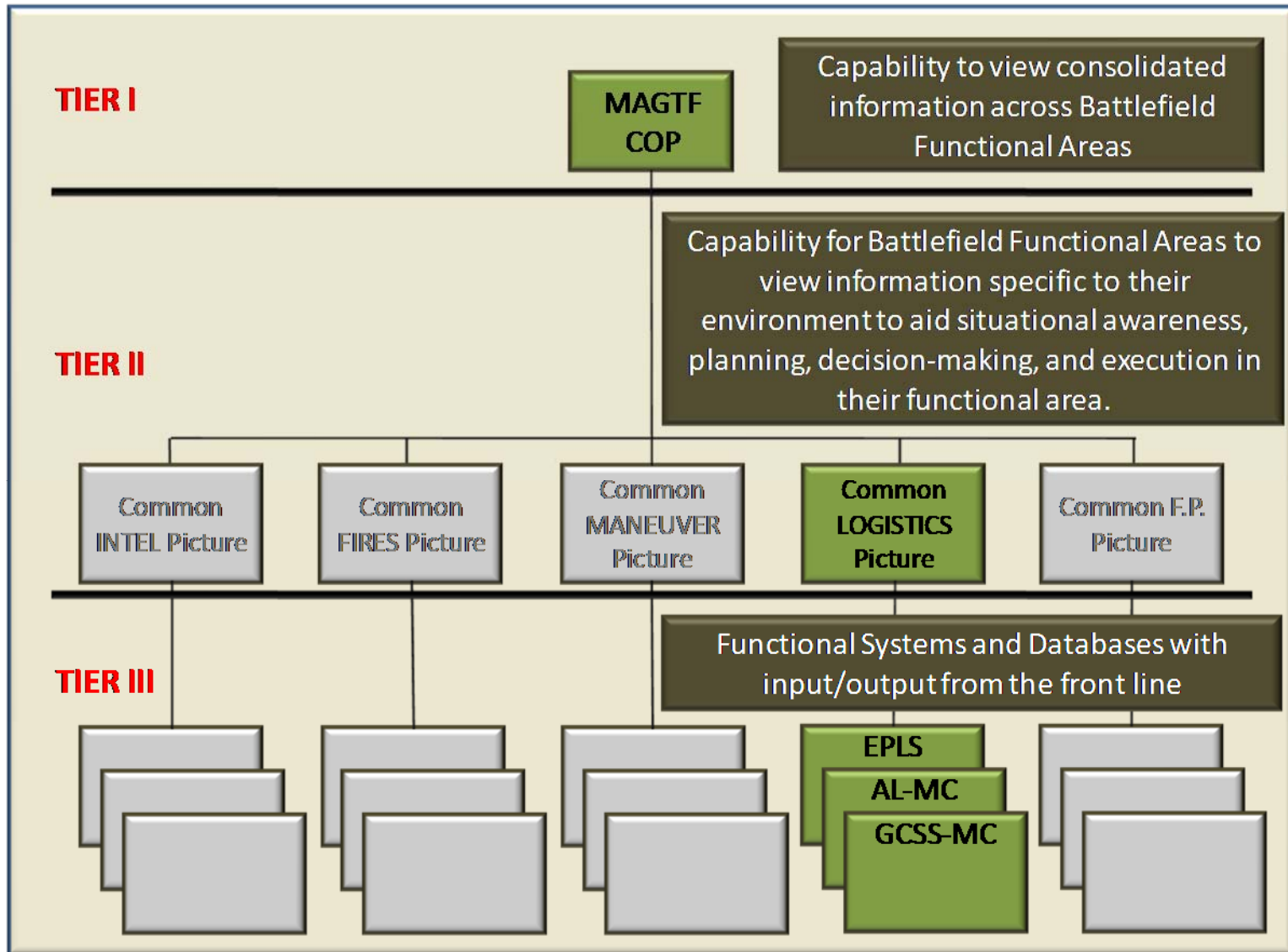


TLCSM of MC Ground Equipment



It's Really All About Improving Decision Making for All Stakeholders!

Linkage of Logistics Applications to Battlefield Functional Areas and MAGTF C2

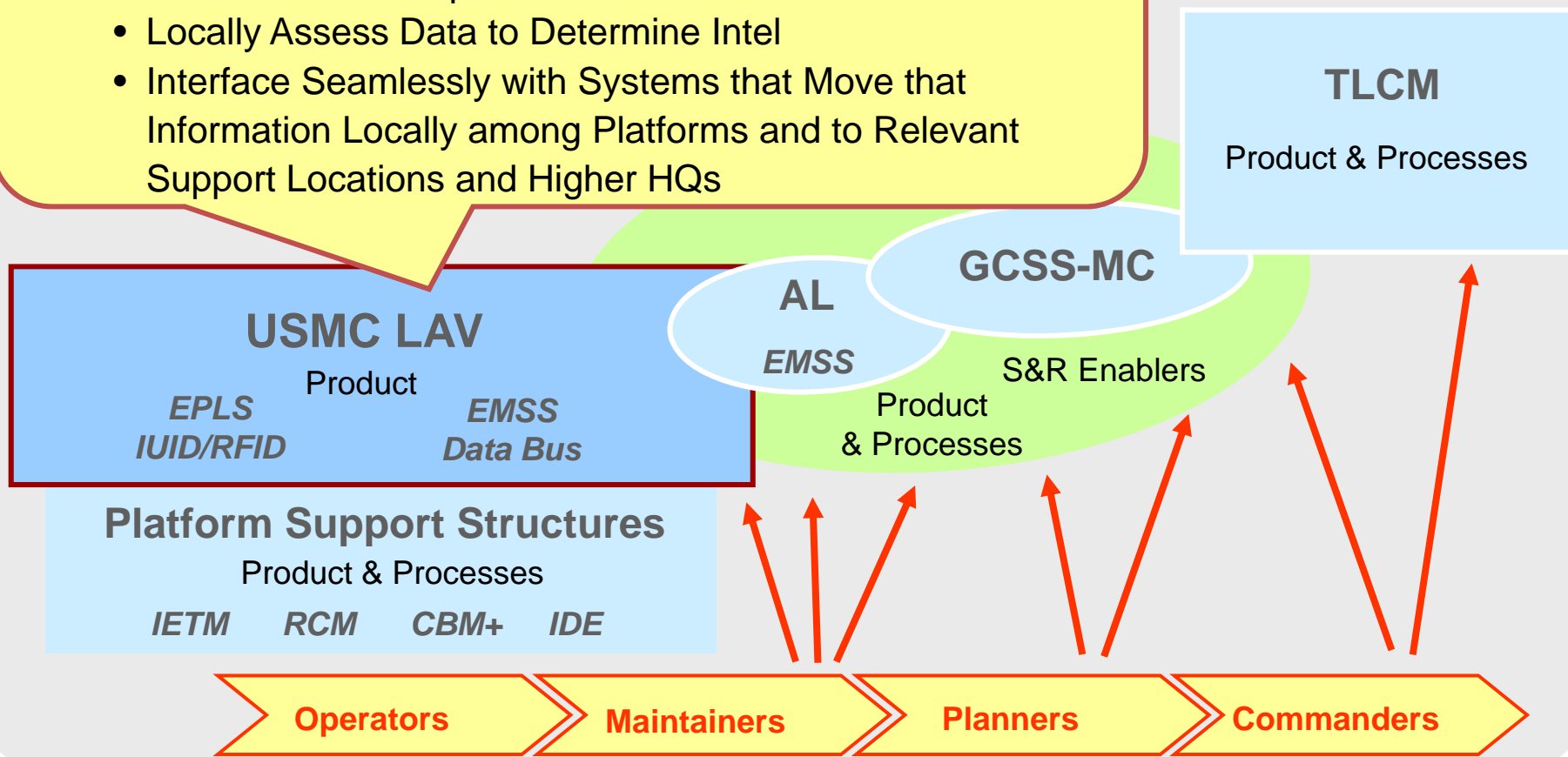


Impact on Platform Design



The PM Provides the Capability on the Platform and within Its Required Support Structures to:

- Sense Pertinent Operations and Sustainment Data
- Locally Assess Data to Determine Intel
- Interface Seamlessly with Systems that Move that Information Locally among Platforms and to Relevant Support Locations and Higher HQs



The Foundation for Sense & Response Logistics is the “Smart” Platform that Integrates with Corporate Technology Enablers to Connect All Stakeholders within the Enterprise

Summary: Lessons Learned



- S&RL is platform centric
- It's all about the data
 - IUID = the DNA code success
 - Must Cross Traditional Boundaries
 - Service - to - Service
 - NATO members
- Evolutionary approach works best
 - Bridge technologies are a foundation
 - Open systems are required
 - A Web 2.0 evolutionary build-out