

SAE International™

“The society dedicated to advancing mobility engineering worldwide”



Regulation



Safety



Regulation. Safety. Environment. Energy.
Advancement on such leading fronts often requires change throughout the mobility supply chain or portions of it. **Change** creates the need for new designs, systems and standards. For each company affected, this almost certainly means rising—even soaring—**investment** in the research, design, development, and testing of new products and systems. There is a **solution...**

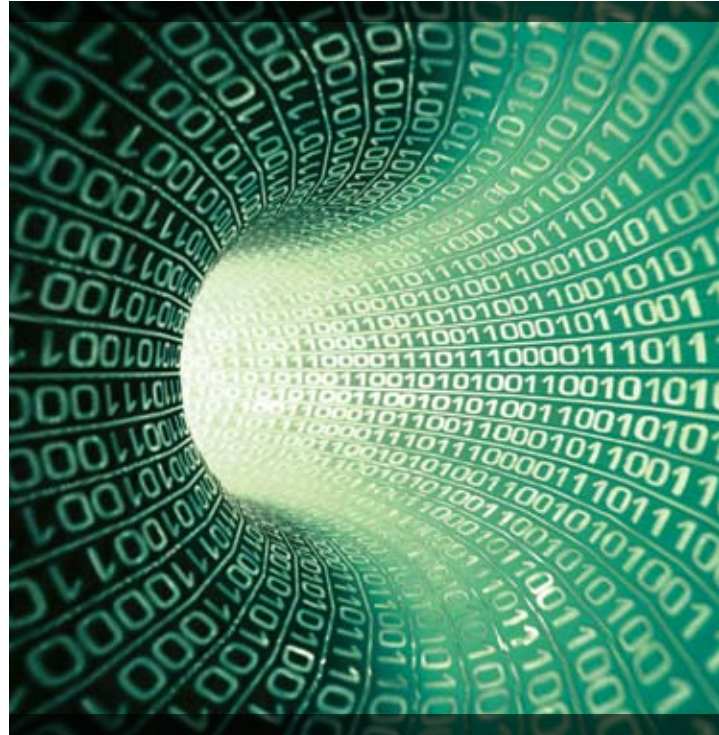


Environment



Energy

...where one issue is faced by many like-companies,
an economical pathway emerges for joint venture
research to study pre-competitive technical areas: the
Cooperative Research Program of SAE International.





To learn more about current CRP projects, request an information packet, or to explore your collaborative research needs, contact the CRP staff at SAE:

Gary Pollak

Program Manager
+1-724-772-7196;
gary@sae.org

Caroline Michaels

Standards Engineer
+1-248-273-2490;
carolinemichaels@sae.org

Kris Siddall

Committee Service
Representative
+1-724-772-7107
ksiddall@sae.org

About CRP

Cooperative research ventures serve to bring more minds to the challenges and issues we face as an industry. The result is a more robust project than each participating organization could complete independently. The pooling of financial resources also affords each participant more efficient use of their research budgets and eliminates duplication of efforts.

Whether moving forward on the development of fuel cell standards...researching alternative refrigerants to HFC 134a...or developing a database of human body measurements to foster ergonomic designs, the purpose of Cooperative Research Program (CRP) is to:

- aid in the development or refinement of technical standards where insufficient data exists.
- provide industry a research pathway that will aid project participants in the advancement of design and/or the development of a technology.
- support government organizations in their assessment of industry-preparedness for proposed regulations.

CRP Services

In its nearly 20 years of business, CRP has established processes for best practices and a track-record for project design, funding, staffing, and implementation to serve a wide range of research purposes. A full service supplier, SAE also collaborates/partners with university laboratories, technical centers, and other research-oriented organizations. Its capabilities include:

- Subcontract administration
- Project management
- Facilitation
- Field work
- Organization of funding and fiscal management
- Proprietary reporting and/or publication
- Consulting

Services are provided and contracted for based on a project's scope and the needs of the client group. CRP ensures projects conform to the National Cooperative Research Act in the USA.



Through its strong affiliation with sister program, SAE standards development, CRP has ready access to the mobility industry's technology experts: the 10,000 plus members of the more than 700 SAE standards committees. An SAE offering, CRP also provides the neutral forum needed for industry cooperation through a nonprofit organization.

CRP Customers & Projects

The CRP customer base consists of mobility industry OEMs and suppliers, government and regulatory groups, universities, trade groups, standards development organizations, and companies outside of mobility with related research interests. Since its establishment in 1989, CRP has completed more than 60 projects ranging in duration from weeks to years including:

- Alternative Refrigerants (CRP150 and CRP1234yf)
- I-MAC (Improved Mobile A/C Systems)
- High Strain Rate Polymer Testing
- Non-Blinding Emergency Vehicle Lighting
- Otologic Trauma
- H₂ Fuel Cell Containment Safety-SAE J2579 Vehicular Hydrogen Systems
- Performance Evaluation of 70 MPa Hydrogen Station Breakaways, Hoses, Fittings and Nozzles
- Dedicated Short Range Communication (DSRC) Data Dictionary and Message Sets SAE J2735
- Dedicated Short Range Communication (DSRC) Implementation Guide
- Intelligent Transportation Systems (ITS) Standards Testing
- NIOSH Truck Anthropometric Study
- CAESAR (a multi-industry study for ergonomic design)





Regulation



Safety



Environment



Energy

An economical pathway for joint venture research: the **Cooperative Research Program** of SAE International.

P81378

SAE International™