



**2010
SAE Diesel Engines
Technology Collection** on CD-ROM
The Essential Source of Diesel Engine Technology



- ▶ More than **3,100** technical papers
- ▶ More than **180** new papers from the SAE 2010 World Congress

store.sae.org



2010 SAE Diesel Engines Technology Collection on CD-ROM

The Essential Source of Diesel Engine Technology



The 2010 SAE Diesel Engines Technology Collection on CD-ROM is a must-have comprehensive resource of the latest design developments for this important power source. You'll have immediate access to more than **3,100** full-text diesel engine-related technical papers, selected from 1989 through the 2010 SAE World Congress. This product features over **360** total updates including **187** new papers from the SAE 2010 World Congress and **159** new papers from 2009.

\$654.00 List Price

Product Code: ENGD2010

Topics include:

- Engine design
- Modeling
- Testing
- Analysis
- Performance
- Parts
- Components
- Materials
- and more

Product Features and Benefits

BONUS Universal Index

Each individual volume includes a fully-searchable database containing citations and concise document summaries. The instant searches are conducted by the powerful Folio® search engine.

Powerful Search Capabilities

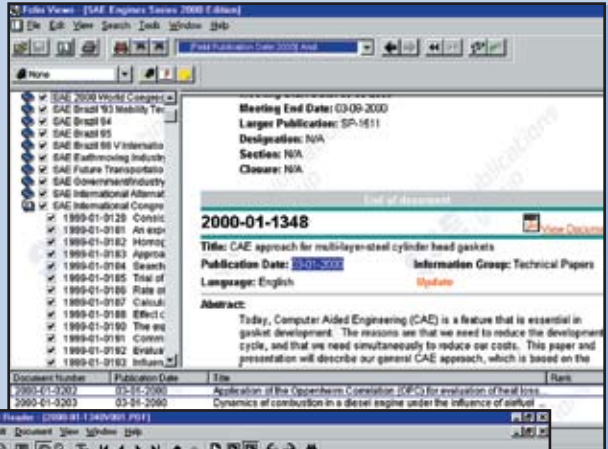
The 2010 SAE Engines Technology Series on CD-ROM products use the Folio® search engine for Windows®. Designed for professionals who need instant access to critical information, Folio® combines intuitive searching with ranked search results to bring you the data you need. This flexible, customizable search interface allows you to choose the most important data, add personal notes or highlight key information, and then search your annotations for customized retrieval.

Search Fields

- Title
- Abstract
- Index terms or subject category
- Author name/affiliation
- Publication date/type/source
- Meeting name/date/location
- Document number
- Reference documents
- Language
- Key words or phrases

Full-text Documents

All technical papers are in PDF format, providing you with crisp, clear text, diagrams, charts, and illustrations for viewing and printing. You can also search individual documents for key words and phrases using Adobe® Acrobat® Reader, which is also included with the CD-ROM.



Windows 7 or Vista 64-bit users, please contact an SAE Sales Representative for an alternative solution.

2010 SAE Diesel Engines Technology Collection on CD-ROM

includes papers from these SAE 2010 World
Congress Special Publications

| SP-2279 | Mixing-Controlled CD Combustion, 2010 |
|--------------|---|
| Paper No. | Title |
| 2010-01-0605 | Investigation of Split Injection in a Single Cylinder Optical Diesel Engine |
| 2010-01-0606 | Effects of Flame Lift-Off and Ambient Temperature on Soot Formation of Biodiesel Combustion |
| 2010-01-0607 | Some Effects of Fuel Autoignition Quality and Volatility in Premixed Compression Ignition Engines |
| 2010-01-0608 | Heat Release Rate and NOx Formation Process in Two-Stage Injection Diesel PCCI Combustion in a Constant Volume Vessel |
| 2010-01-0609 | Mixing-Controlled, Low Temperature Diesel Combustion with Pressure Modulated Multiple-Injection for HSDI Diesel Engine |
| 2010-01-0610 | Liquid Penetration of Diesel and Biodiesel Sprays at Late-Cycle Post-Injection Conditions |
| 2010-01-0611 | Effects of Fuel Injection Parameters on Low Temperature Diesel Combustion Stability |
| 2010-01-0612 | Effects of Post Injections on In-Cylinder and Exhaust Soot for Low-Temperature Combustion in a Heavy-Duty Diesel Engine |
| 2010-01-0862 | Optical Investigation of UHC and CO Sources from Biodiesel Blends in a Light-Duty Diesel Engine Operating in a Partially Premixed Combustion Regime |
| 2010-01-0864 | An Experimental Investigation of Fuel Reactivity Controlled PCCI Combustion in a Heavy-Duty Engine |
| 2010-01-0865 | Combustion Analysis in an Optical Diesel Engine Operating with Low Compression Ratio and Biodiesel Fuels |
| 2010-01-0866 | Improvements to Premixed Diesel Combustion with Ignition Inhibitor Effects of Premixed Ethanol by Intake Port Injection |
| 2010-01-0867 | Biodiesel Fuel's Effects on the Cycle-to-cycle Variability of Combustion Characteristics in a Common-Rail Medium-Duty Diesel Engine |
| 2010-01-0868 | The Effects of Oxygenated Biofuel on Intake Oxygen Concentration, EGR, and Performance of a 1.9L Diesel Engine |
| 2010-01-0869 | An Experimental Study of Dual Fueling with Gasoline Port Injection in a Single-Cylinder, Air-Cooled HSDI Diesel Generator |
| 2010-01-0870 | Emission and Ignition Effects of Alternative Fuels at Conventional and Premixed Diesel Combustion |
| 2010-01-0871 | Effects of Ethanol and Different Type of Gasoline Fuels on Partially Premixed Combustion from Low to High Load |
| 2010-01-0872 | Study of a Heavy Duty Euro5 EGR-engine Sensitivity to Fuel Change with Emphasis on Combustion and Emission Formation |
| 2010-01-1117 | Study on Improvement of Combustion and Effect of Fuel Property in Advanced Diesel Engine |
| 2010-01-1118 | Efficiency & Stability Improvements of Diesel Low Temperature Combustion through Tightened Intake Oxygen Control |
| 2010-01-1119 | Effects of Intake Charge Distribution in HSDI Engines |
| 2010-01-1120 | Reduction of NOx and PM for a Heavy Duty Diesel using 50% EGR Rate in Single Cylinder Engine |
| 2010-01-1121 | Particle Size Distribution Measurements from Early to Late Injection Timing Low Temperature Combustion in a Heavy Duty Diesel Engine |
| 2010-01-1122 | Fuel Effects on Low Temperature Combustion in a Light-Duty Diesel Engine |
| 2010-01-1123 | Comparison between Combustion , Performance and Emissions characteristics of JP-8 and Ultra Low Sulfur Diesel Fuel in a Single Cylinder Diesel Engine |
| 2010-01-1124 | Effect of Variable Valve Timing on Diesel Combustion Characteristics |
| 2010-01-1125 | Diesel Engine Combustion Control: Middle EGR or Heavy EGR? |
| 2010-01-1256 | Clean Diesel Combustion by means of the HCPC Concept |
| 2010-01-1258 | Application of Particle Swarm Optimization for Diesel Engine Performance Optimization |

| | |
|------------------|---|
| 2010-01-1259 | Numerical Study on the Effects of Biodiesel on Combustion and Emission Characteristics in a Direct Injection (DI) Diesel Engine |
| 2010-01-1260 | A Numerical Investigation on Combustion Characteristics with the use of Post Injection in DI Diesel Engines |
| 2010-01-1261 | Effect of Charge Density on Emissions in a HD-LTC Diesel Engine by Retarding Intake Valve Timing and Rising Boost Pressure |
| 2010-01-1262 | Optimization of DI-Diesel Engine Operating Parameters using a Response Surface Method |
| 2010-01-1263 | A Computational Investigation of Stepped-Bowl Piston Geometry for a Light Duty Engine Operating at Low Load |
| SP-2280 | Kinetically Controlled CI Combustion and Controls, 2010 |
| Paper No. | Title |
| 2010-01-0333 | Effects of Low Temperature Premixed Combustion on Emissions of a Modern Diesel Engine for Passenger Cars |
| 2010-01-0334 | Impact of Fuel Properties on Advanced Combustion Performance in a Diesel Bench Engine and Demonstrator Vehicle |
| 2010-01-0335 | Potential of Cellulose-Derived Biofuels for Soot Free Diesel Combustion |
| 2010-01-0337 | Investigation of the Effects of Cetane Number, Volatility, and Total Aromatic Content on Highly-Dilute Low Temperature Diesel Combustion |
| 2010-01-0339 | Effects of Injection Pressure on Low-sooting Combustion in an Optical HSDI Diesel Engine Using a Narrow Angle Injector |
| 2010-01-0340 | Improving Diesel Engine Performance Using Low and High Pressure Split Injections for Single Heat Release and Two-Stage Combustion |
| 2010-01-0341 | Experimental Study on Improvement of Diesel Combustion and Emissions Using Flash Boiling Injection |
| 2010-01-0577 | Investigation of NO _x Predictions from Biodiesel-fueled HCCI Engine Simulations using a Reduced Kinetic Mechanism |
| 2010-01-0578 | Study on HCCI Combustion and Emission Characteristics of Diesel Engine Fueled with Methanol/DME Blended Fuel |
| SP-2281 | Modeling of SI and Diesel Engines, 2010 |
| Paper No. | Title |
| 2010-01-0148 | Development and Validation of Predictive Emissions Schemes for Quasi-dimensional Combustion Models |
| 2010-01-0149 | The Development of an Highly Modular Designed Zero-Dimensional Engine Process Calculation Code |
| 2010-01-0150 | Quasi-Dimensional Modeling of CI-Combustion with Multiple Pilot- and Post Injections |
| 2010-01-0151 | Quasi-Dimensional and Empirical Modeling of Compression Ignition Engine Combustion and Emissions |
| 2010-01-0152 | Moving Toward Establishing More Robust and Systematic Model Developments for IC Engines using Process Informatics |
| 2010-01-0153 | Identification of the Error Introduced in DI Diesel Engine Phenomenological Multi-Zone Models from Assumptions Related to the Initial Conditions at the Nozzle Exit |
| 2010-01-0154 | Evaluation of an Advanced Diagnostic Technique for the Determination of Diesel Engine Condition and Tuning Based on Laboratory Measurements |
| 2010-01-0155 | A Semi Empiric Model based Approach for Dynamic Prediction of NO _x Engine-out Emissions on Diesel Engines |
| 2010-01-0315 | Potentiality for Optimizing Operational Performance and Thermal Management of Diesel Truck Engine Rankine Cycle by Recovering Heat in EGR Cooler |
| 2010-01-0545 | Validation Studies of a Detailed Kinetics Mechanism for Diesel and Gasoline Surrogate Fuels |
| 2010-01-1056 | Measurement and Computation of the Characteristics of Progressive Valve Springs |
| 2010-01-1194 | Integrated 1D-3D Fluid Dynamic Simulation of a Turbocharged Diesel Engine with Complete Intake and Exhaust Systems |

| SP-2282 Multi-Dimensional Engine Modeling, 2010 | |
|--|---|
| Paper No. | Title |
| 2010-01-0178 | Efficient Simulation of Diesel Engine Combustion Using Realistic Chemical Kinetics in CFD |
| 2010-01-0179 | Experimental and Numerical Investigation of High-Pressure Diesel Sprays with Multiple Injections at Constant Volume Conditions |
| 2010-01-0180 | The Impact of Engine Design Constraints on Diesel Combustion System Size Scaling |
| 2010-01-0181 | A Consistent Flamelet Model to Describe the Interaction of Combustion Chemistry and Mixing in the Controlled Auto Ignition Regime |
| 2010-01-0182 | Investigation of Spray-Bowl Interaction using Two-Part Analysis in a Direct-Injection Diesel Engine |
| 2010-01-0357 | Modeling of the Auto-ignition Process of a Non-homogeneous Mixture in a Diesel Spray for CFD |
| 2010-01-0358 | On the Application of the Flamelet Generated Manifold (FGM) Approach to the Simulation of an Igniting Diesel Spray |
| 2010-01-0359 | The Effects of Injection Timing and Piston Bowl Shape on the PHCCI Combustion with Split Injections using 3-D Simulation |
| 2010-01-0361 | Validation of an LES Multi-Mode Combustion Model for Diesel Combustion |
| 2010-01-0627 | Real Gas Effects in High-Pressure Engine Environment |
| SP-2283 Fuel Injection and Sprays, 2010 | |
| Paper No. | Title |
| 2010-01-0874 | Phenomenological Approach for Common Rail Diesel Engine Emission and Performance Prediction |
| 2010-01-0876 | Precise fuel control of Diesel Common-rail System by Using OFEM |
| 2010-01-0877 | Near-nozzle Structure of Diesel Sprays Affected by Internal Geometry of Injector Nozzle: Visualized by Single-shot X-ray Imaging |
| 2010-01-0879 | An Experimental Study on Steady Flash Boiling Spray Characteristics of DME/Diesel Blended fuel |
| 2010-01-0880 | Experimental and Numerical Analysis of High Pressure DME Spray |
| 2010-01-1127 | The Possibilities of Wax Precipitation from Diesel Fuels at High Pressure and its Influence on Diesel Engine Performance |
| 2010-01-1129 | Prediction of Liquid and Vapour Penetration of Early-injection Diesel Sprays |
| 2010-01-1130 | Lattice Boltzmann Modeling of Diesel Spray Formation and Break-Up |
| 2010-01-1131 | Potential and Challenges of a 3000 bar Common-Rail Injection System Considering Engine Behavior and Emission Level |
| 2010-01-1132 | Innovations in Experimental Techniques for the Development of Fuel Path Control in Diesel Engines |
| 2010-01-1133 | Large Eddy Simulation of a Transient Gas Jet with Emphasis on Entrainment during Deceleration |
| 2010-01-1134 | An Investigation of Multiple Injection Strategy in a Diesel Premixed Charge Compression Ignition Combustion Engine |
| SP-2285 Engine Control and Calibration, 2010 | |
| Paper No. | Title |
| 2010-01-0330 | Auto-Tuning of PID Controllers for Calibration of Idle Speed Controller Maps in Diesel Engines |
| 2010-01-0332 | Modelling Techniques to Support Fuel Path Control in a Medium Duty Diesel Engine |
| 2010-01-0564 | Cylinder Pressure-based Control in Heavy-duty EGR Diesel Engines using a Virtual Heat Release and Emission Sensor |
| 2010-01-0565 | Biodiesel System Response Changes and their Impact on Nitric Oxide Emissions |
| 2010-01-0566 | The Emission Development for Lean NOx Trap System to Meet Tier2Bin5 |
| 2010-01-0568 | Model Based Fault Detection for Variable Geometry Turbochargers on a Diesel Engine |
| 2010-01-0569 | Integration of Reformer Model-based Estimation, Control, and Diagnostics for Diesel LNT-based Aftertreatment Systems |
| SP-2287 Diesel Exhaust Emission Control, 2010 | |
| Paper No. | Title |
| 2010-01-0300 | The Effects of Sulfur Poisoning and Desulfation Temperature on the NOx Conversion of LNT+SCR Systems for Diesel Applications |
| 2010-01-0302 | Advanced Catalysts for Combined (NAC + SCR) Aftertreatment Systems |
| 2010-01-0303 | Development of Clean Diesel NOx After-treatment System with Sulfur Trap Catalyst |

| | |
|--------------|--|
| 2010-01-0305 | Laboratory and Vehicle Demonstration of a "2nd-Generation" LNT+in-situ SCR" Diesel NOx Emission Control System |
| 2010-01-0306 | Simultaneous Reduction of NOx and PM in Diesel Exhaust Based on the Electrochemical Reaction |
| 2010-01-0307 | Particulate Matter Sensor for on Board Diagnosis (OBD) of Diesel Particulate Filter (DPF) |
| 2010-01-0308 | A Novel Approach for Diesel NOx / PM Reduction |
| 2010-01-0531 | Performance Verification of Next Generation Diesel Particulate Filter |
| 2010-01-0532 | A New Approach for a Diesel Particle Filter Material with Liquid Phase Sintered Silicon Carbide and an Innovative Segmented Geometry |
| 2010-01-0533 | A Study of Active and Passive Regeneration Using Laboratory Generated Soot on a Variety of SiC Diesel Particulate Filter Formulations |
| 2010-01-0534 | Lattice Boltzmann Simulation on Particle Transport and Captured Behaviors in a 3D-reconstructed Micro Porous DPF |
| 2010-01-0535 | Dependence of Fuel Consumption on DPF Backpressure |
| 2010-01-0536 | The Legislative Impact of New Particle Number Standards on the DPF Operational Efficiency |
| 2010-01-0537 | Detailed Examination of Filtration Processes in Diesel Particulate Filter Membranes with Channel Structure Modification |
| 2010-01-0538 | 3D Numerical Study of Pressure loss Characteristics and Filtration Efficiency through a Frontal Unplugged DPF |
| 2010-01-0539 | XP-SiC: A new Approach to Design High Porosity Substrates |
| 2010-01-0557 | Effects of Biodiesel Blends on Catalyzed Particulate Filter PM Oxidation for Passive and Active Regeneration |
| 2010-01-0558 | On the Development of Low PGM Content Direct Soot Combustion Catalysts for Diesel Particulate Filters |
| 2010-01-0559 | NO2 Reduction, Passive and Active Soot Regeneration Performance of a Palladium Base Metal Coating on SiC Filters |
| 2010-01-0560 | Deployment of Passive / Active DPF System Utilizing Syngas Regeneration Strategy - Retrofit, Real Life Optimization and Performance Experience |
| 2010-01-0561 | Fuel Vaporizer: Alternative Solution for DPF Regeneration |
| 2010-01-0562 | Low Temperature Active Regeneration of Soot using Hydrogen in a Multi-channel Catalyzed DPF |
| 2010-01-0563 | PM Control with Low NO2 Tailpipe Emissions by Systems with Non-PGM Catalyzed DPF for Passive Soot Regeneration |
| 2010-01-0808 | Particulate Matter Trapping and Oxidation on a Catalyst Membrane |
| 2010-01-0809 | A New Instrument for Diesel Particulate Filter Functional Tests in Development and Quality Control Applications |
| 2010-01-0811 | Ash Effects on Diesel Particulate Filter Pressure Drop Sensitivity to Soot and Implications for Regeneration Frequency and DPF Control |
| 2010-01-0813 | Study of Diesel Particulate Filter Performances by a Diesel Engine Simulator |
| 2010-01-0814 | Accurate Measurements of Heat Release, Oxidation Rates, and Soluble Organic Compounds of Diesel Particulates through Thermal Reactions |
| 2010-01-0815 | Engine Test for DOC Quenching in DOC-DPF System for Non-Road Applications |
| 2010-01-1066 | Effective Usage of LNT in High Boosted and High EGR Rate of Heavy Duty Diesel Engine |
| 2010-01-1067 | Development of Control Logic and Optimization of Catalyst in DeNOx System with Secondary Injection for Euro 6 |
| 2010-01-1070 | Fuel Vaporizer Catalyst Enables Compact Aftertreatment System Packaging by Reducing Mixing Length |
| 2010-01-1071 | Study of On-Board Ammonia (NH3) Generation for SCR Operation |
| 2010-01-1170 | Volume Reduction of SCR Catalyst by Using Zeolite-base Honeycomb Substrate |
| 2010-01-1171 | Hydrocarbon Effect on a Fe-zeolite Urea-SCR Catalyst: An Experimental and Modeling Study |
| 2010-01-1172 | Specifics of Daimler's new SCR system (BLUETEC) in the Diesel Sprinter Van - Certified for NAFTA 2010 |
| 2010-01-1173 | Effects of B20 Fuel and Catalyst Entrance Section Length on the Performance of UREA SCR in a Light-duty Diesel Engine |

| | |
|------------------|---|
| 2010-01-1174 | An Adaptive Proportional Integral Control of a Urea Selective Catalytic Reduction System based on System Identification Models |
| 2010-01-1175 | Model Predictive Control of a Combined EGR/SCR HD Diesel Engine |
| 2010-01-1177 | Experimental Study of SCR in a Light-duty Diesel Exhaust to Provide Data for Validation of a CFD Model using the Porous Medium Approach |
| 2010-01-1179 | New Titania Materials with Improved Stability and Activity for Vanadia-Based Selective Catalytic Reduction of NO _x |
| 2010-01-1180 | Deactivation of Cu/Zeolite SCR Catalyst Under Lean-Rich Aging |
| 2010-01-1181 | The "Enhanced NH ₃ -SCR" Reaction for NO _x Abatement |
| 2010-01-1182 | Why Cu- and Fe-Zeolite SCR Catalysts Behave Differently at Low Temperatures |
| 2010-01-1183 | The Development of Advanced Urea- SCR Systems for Tier 2 Bin 5 and Beyond Diesel Vehicles |
| 2010-01-1184 | Model Predictive Control: A Unified Approach for Urea-Based SCR Systems |
| 2010-01-1185 | Development of a Novel Device to Improve Urea Evaporation, Mixing and Distribution to Enhance SCR Performance |
| 2010-01-1186 | Development and Field Performance Validation of a Retrofit SCR System for On-Road Heavy-Duty Application |
| 2010-01-1211 | Review of Soot Deposition and Removal Mechanisms in EGR Coolers |
| 2010-01-1212 | Investigations on Chemical Ageing of Diesel Oxidation Catalysts and Coated Diesel Particulate Filters |
| 2010-01-1213 | Characteristics and Effects of Lubricant Additive Chemistry on Ash Properties Impacting Diesel Particulate Filter Service Life |
| 2010-01-1214 | Spatially-Resolved Thermal Degradation Induced Changes Along a Commercial Lean NO _x Trap Catalyst |
| 2010-01-1215 | Thermal Analysis of Diesel After-Treatment System |
| 2010-01-1216 | Meeting the EURO VI NO _x Emission Legislation using a EURO IV Base Engine and a SCR/ ASC/DOC/DPF Configuration in the World Harmonized Transient Cycle |
| 2010-01-1218 | Diesel Catalyst Aging Using a FOCAS HGTR, a Diesel Burner System, to Simulate Engine-Based Aging |
| SP-2288 | Diesel Exhaust Emission Modeling, 2010 |
| Paper No. | Title |
| 2010-01-0881 | A General 3D Model to Analyze Particle Transport Into a Partial-Flow-Particulate-Filter |
| 2010-01-0882 | Lean NO _x Trap Modeling in Vehicle Systems Simulations |
| 2010-01-0883 | Mixture Non-Uniformity in SCR Systems: Modeling and Uniformity Index Requirements for Steady-State and Transient Operation |
| 2010-01-0884 | Modeling of P Poisoning over Diesel Oxidation Catalyst |
| 2010-01-0885 | Modeling Water Condensation in Exhaust After-Treatment Devices |
| 2010-01-0886 | Model-Based Diesel HCCI Transient Controller in Integrated System Level Modeling |
| 2010-01-0887 | Modelling of NO _x Storage + SCR Exhaust Gas Aftertreatment System with Internal Generation of Ammonia |
| 2010-01-0888 | Virtual Exhaust Line for Model-based Diesel After Treatment Development |
| 2010-01-0889 | Development and Validation of a Predictive Model for DEF Injection and Urea Decomposition in Mobile SCR DeNO _x -Systems |
| 2010-01-0890 | Computationally Fast Implementations of Convection, Diffusion and Chemical Reaction Phenomena in Diesel Particulate Filters |
| 2010-01-0891 | A Modeling and Experimental Investigation on an Innovative Substrate for DPF Applications |
| 2010-01-0892 | Study the DPF Regeneration at Transient Operating Conditions Using Integrated System-Level Model |
| 2010-01-0893 | Applications of Multi-layer Catalyst Modeling in deNO _x and DPF Systems |
| 2010-01-0894 | Effects of Biofuel Blends on Performance of Exhaust Gas Catalyst: Ethanol and Acetaldehyde Reactions |

| SP-2292 Advances in Alternative Energy and Fuels for the Transportation Sector, 2010 | |
|---|--|
| Paper No. | Title |
| 2010-01-0468 | Investigation of Fuel Impurities Effect on DME Powered Diesel Engine System |
| 2010-01-0472 | Alternative Diesel Fuels Effects on Performance and Emissions of an Euro5 Automotive Diesel Engine |
| 2010-01-0475 | The Impact of a Polyethylene-Diesel Blended Fuel on Combustion and Emissions in a Compression Ignition Engine |
| 2010-01-0480 | Numerical Investigation of Flow Field and Combustion in a Dual Fuel Diesel Engine |
| 2010-01-0481 | Butanol as Diesel Extender Option for Internal Combustion Engine |
| SP-2293 New Engines and Components, 2010 | |
| Paper No. | Title |
| 2010-01-1100 | Analytical Life Prediction Modeling for Diesel Fuel Filters Optimization |
| 2010-01-1101 | The New Ford Motor Co. 6.7L Diesel V8 Engine |
| 2010-01-1102 | Performance Improvement of Oil Pump of a Passenger Car Diesel Engine to Enable use of Low Viscous Oil Operating at High Thermal Levels |
| 2010-01-1103 | Soot filtration for Diesel Engine Lubricating Oil |
| 2010-01-1105 | Simulation of Key Design Parameters and Performance Optimization for a Free-piston Engine |
| 2010-01-1107 | A Study of High Power Output Diesel Engine with Low Peak Cylinder Pressure |
| 2010-01-1109 | Injection Strategy and EGR Rate Effects on Combustion and Emissions in Conventional and PCCI Diesel Engines |
| 2010-01-1110 | High Efficiency Hybrid Cycle Engine |
| 2010-01-1113 | Analysis of the Impact on Diesel Engine Fuel Economy and Emissions by Variable Compression Ratio Using GT-Power Simulation |
| SP-2294 Advances In Light Weight Materials - Aluminum, Casting Materials, and Magnesium Technologies, 2010 | |
| Paper No. | Title |
| 2010-01-0654 | Ferrous High-Temperature Alloys for Exhaust Component Applications |
| 2010-01-0655 | Novel Method for Casting High Quality Aluminum Turbocharger Impellers |
| 2010-01-0657 | Technical Keynote: Preliminary Evaluation of a Low-Cost Cast Iron for Exhaust Manifold and Turbocharger Housing Applications |
| SP-2295 Optical Measurement Nondestructive Testing Techniques, 2010 | |
| Paper No. | Title |
| 2010-01-0502 | Exhaust Manifold Structural Analysis Focusing Mass Reduction for Vehicular Diesel Engine Application |
| Papers not included in a Special Publication | |
| Paper No. | Title |
| 2010-01-0168 | Combustion Characterization in Diesel Engine via Block Vibration Analysis |
| 2010-01-0262 | Numerical Simulation of Boiling Heat Transfer in Water Jacket of DI Engine |
| 2010-01-0342 | Study of Air Entrainment of Multi-hole Diesel Injection by Particle Image Velocimetry - Effect of Neighboring Jets Interaction and Transient Behavior After End of Injection |
| 2010-01-0730 | Physicochemical Characteristics of Soot Deposits in EGR Coolers |
| 2010-01-1061 | An Industry Prepares Service Technicians for Refrigerant Transition |
| 2010-01-1189 | Lost-Motion VVA Systems for Enabling Next Generation Diesel Engine Efficiency and After-Treatment Optimization |
| 2010-01-1199 | Thermodynamic Potentials of Fully Variable Valve Actuation Systems for Passenger-Car Diesel Engines |
| 2010-01-1220 | Model-Based Characterization and Analysis of Diesel Engines with Two-Stage Turbochargers |
| 2010-01-1228 | Coordinated Electric Supercharging and Turbo-Generation for a Diesel Engine |
| 2010-01-1229 | Matching and Evaluating Methods for Euro 6 and Efficient Two-stage Turbocharging Diesel Engine |
| 2010-01-1267 | Analysis of Combustion Process in Cold Operation with a Low Compression Ratio Diesel Engine |
| 2010-01-1271 | Transient EGR in a High-Speed DI Diesel Engine for a set of different EGR-routings |
| 2010-01-1318 | Demonstration of Power Improvements on a Diesel Engine Operating on Multiple Fuels |

Note: The availability of the papers in this promotion may change due to cancellations or other modifications.

Additional SAE Engines Technology Products on CD-ROM



2010 SAE Emissions Technology Collection on CD-ROM

The *2010 SAE Emissions Technology Collection on CD-ROM* gives engine designers and engineers instant access to the latest, most comprehensive emissions-related information available to the industry. This single-user set provides more than **4,000** key technical papers presented at SAE conferences from 1975 through the 2010 SAE World Congress. This product features over **180** total updates including **58** new papers from the SAE 2010 World Congress and **122** new papers from 2009.

\$680.00 List Price

Product Code: EMISS2010



2010 SAE Spark-Ignition Engines Technology Collection on CD-ROM

The *2010 SAE Spark-Ignition Engines Technology Collection on CD-ROM* gives engine designers and engineers instant access to the latest technical information available to the industry. This collection provides more than **4,800** key technical papers presented at SAE conferences from 1989 through the 2010 SAE World Congress. This product features over **350** total updates including **178** new papers from the SAE 2010 World Congress and **174** new papers from 2009.

\$654.00 List Price

Product Code: ENGS2010

Special Savings Offer

The SAE Engine Series Collections are available in any combination.

2 collections: \$1,117* • All 3 collections: 1,630*

**No additional discounts apply. All prices are subject to change without notice.*

For more information on these products visit store.sae.org/webcd.htm

P100847

SAE International®

400 Commonwealth Drive
Warrendale, PA 15096-0001



**2010
SAE Diesel Engines
Technology Collection** on CD-ROM
The Essential Source of Diesel Engine Technology

SAE®

▶ More than **3,100** technical papers

▶ More than **180** new papers from the
SAE 2010 World Congress

store.sae.org